



US-1 CONGESTION MANAGEMENT STUDY



Public Engagement Workshop
May 23, 2024

Consultants:

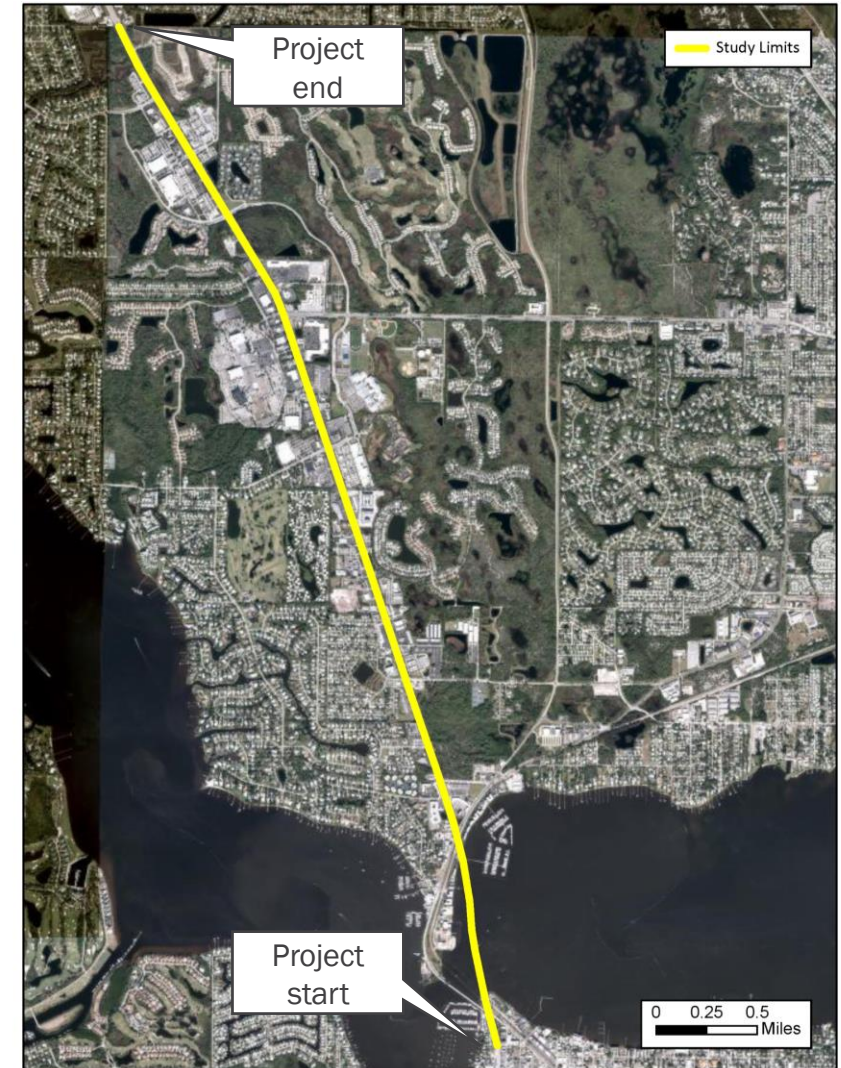
Kimley»»Horn

BONNIE LANDRY
& ASSOCIATES Professional Planning Services



Background on US-1

- **Study Limits:** SW Joan Jefferson Way to Martin/St. Lucie County Line
- **Length:** 4.8 miles
- **Posted Speed Limit:** 45 miles per hour
- **Average Annual Daily Traffic (AADT):** 47,000 – 63,000 vehicles per day
 - Segment with highest AADT is US-1 from SR-732 to Westmoreland Boulevard





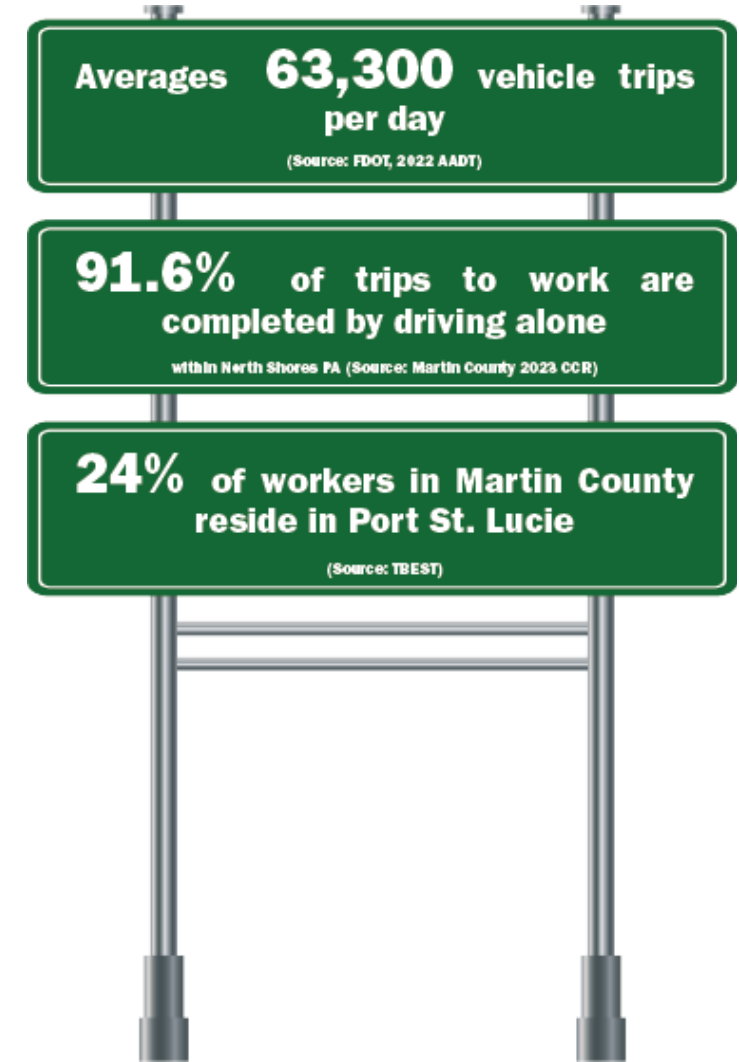
Project Objectives

- Identify Corridor Focus Areas
- Identify non-widening opportunities to achieve viable transportation options and enhanced efficiency
- Identify opportunities to increase connectivity through improved grid/network
- Identify opportunities to further develop multimodal network
- Identify opportunities to enhance safety
- Identify strategies to connect with joint and cross access connections



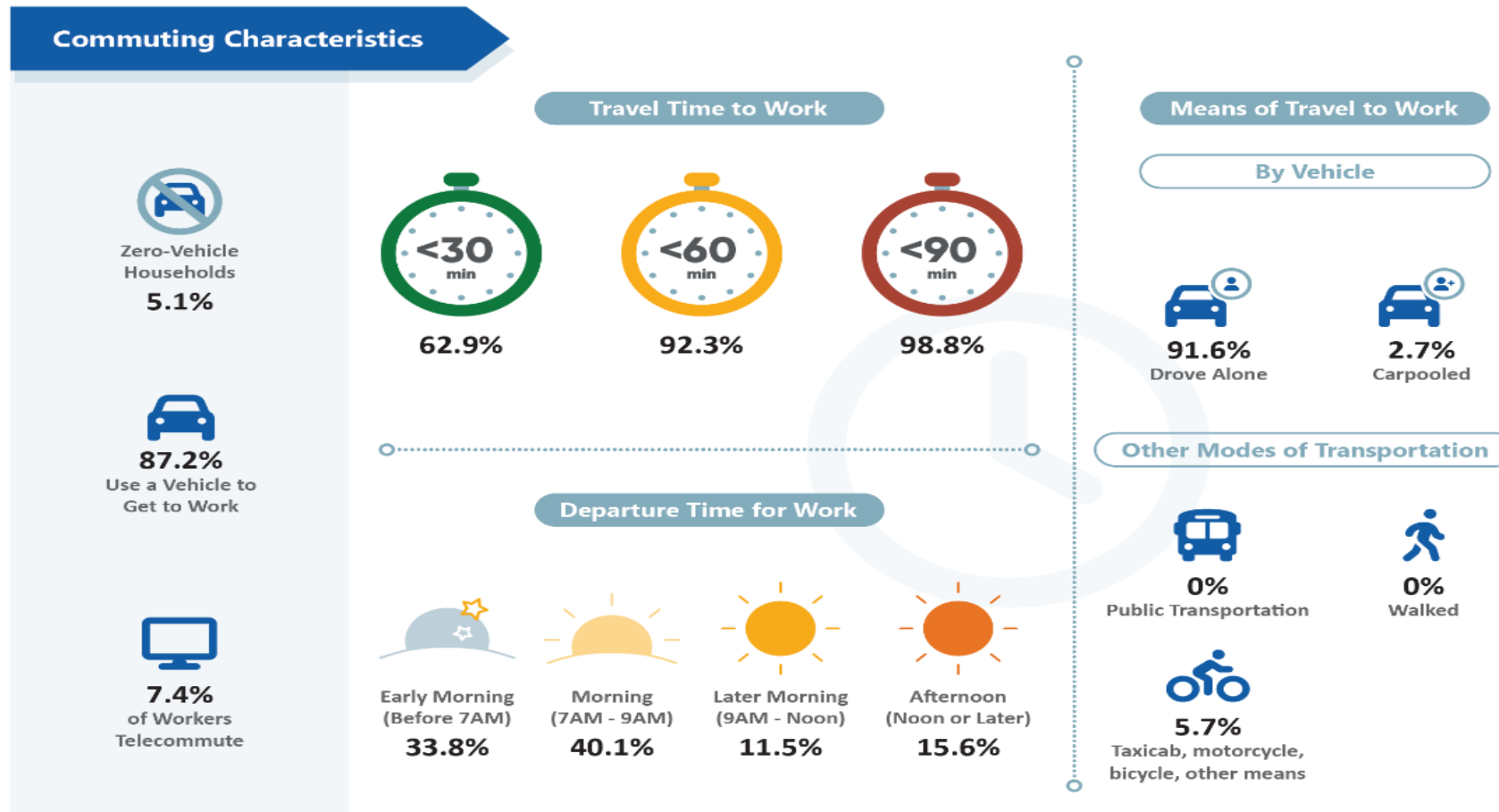
Challenges Throughout US-1 Corridor

- Constrained roadway conditions, widening deemed infeasible
- Continual employment and residential growth
- Vehicle-dependent environment
- Lack of connectivity between different land uses
- Coordination between multiple property owners poses a challenge



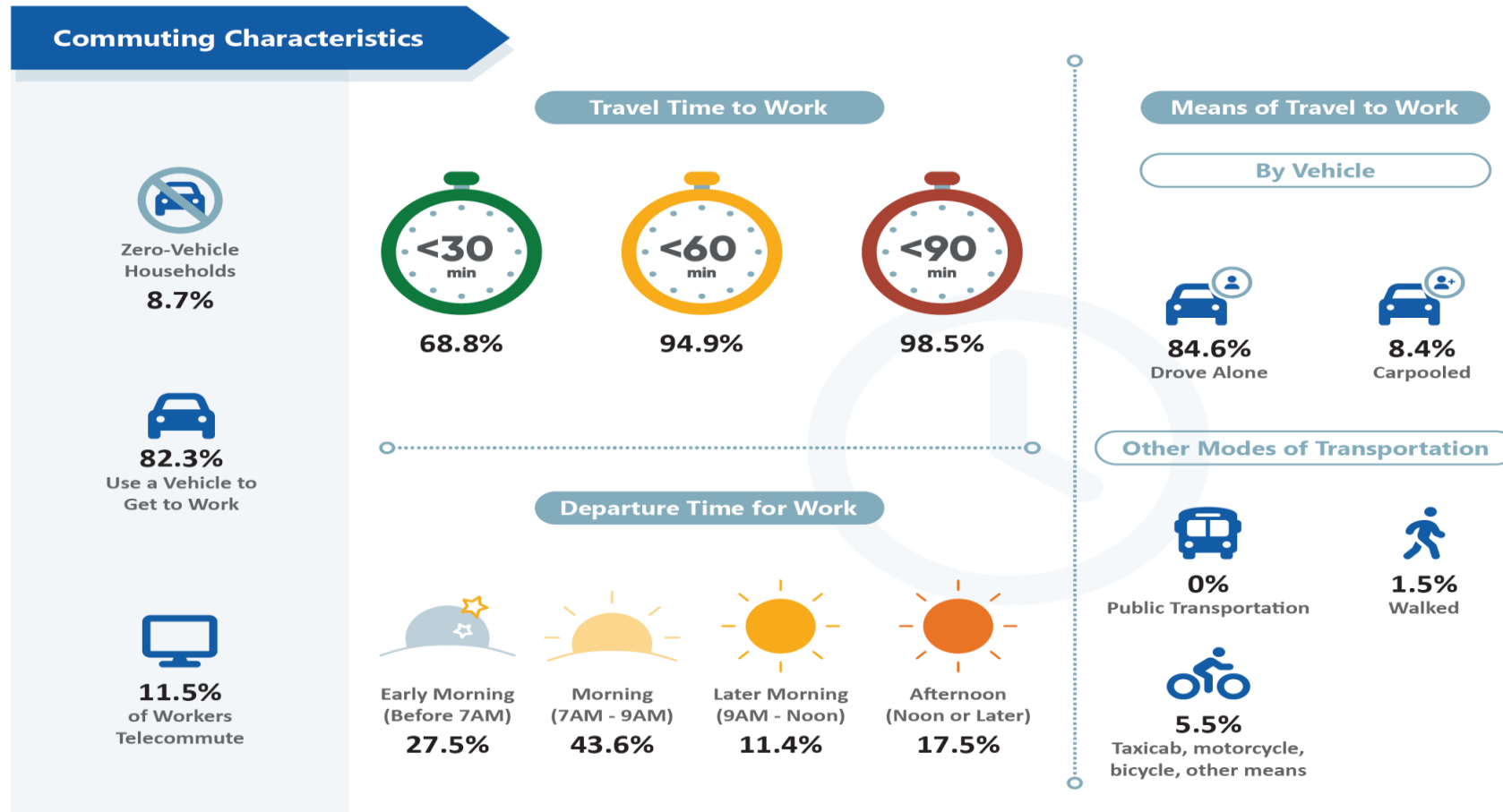


Commuting Patterns





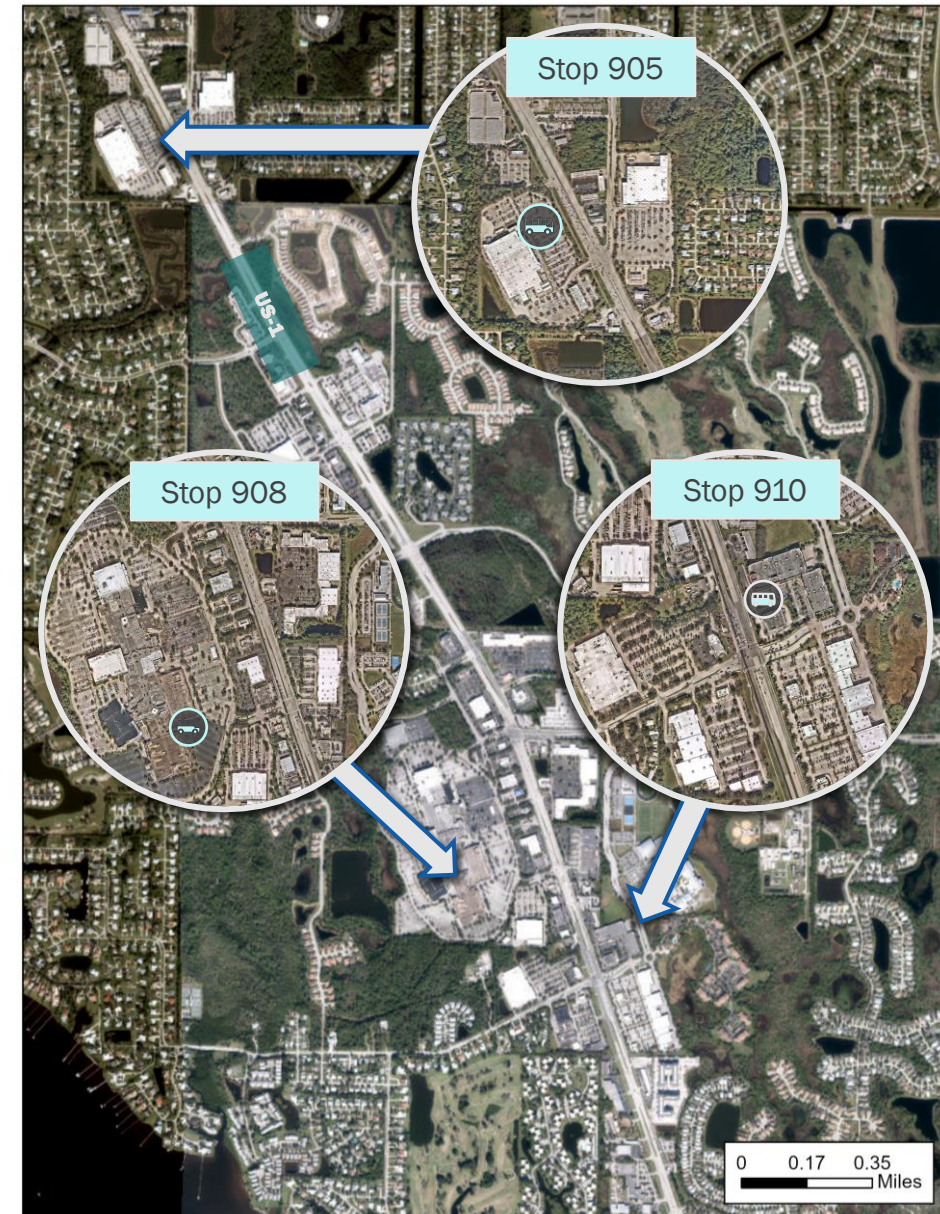
Commuting Patterns





Existing Transit Conditions

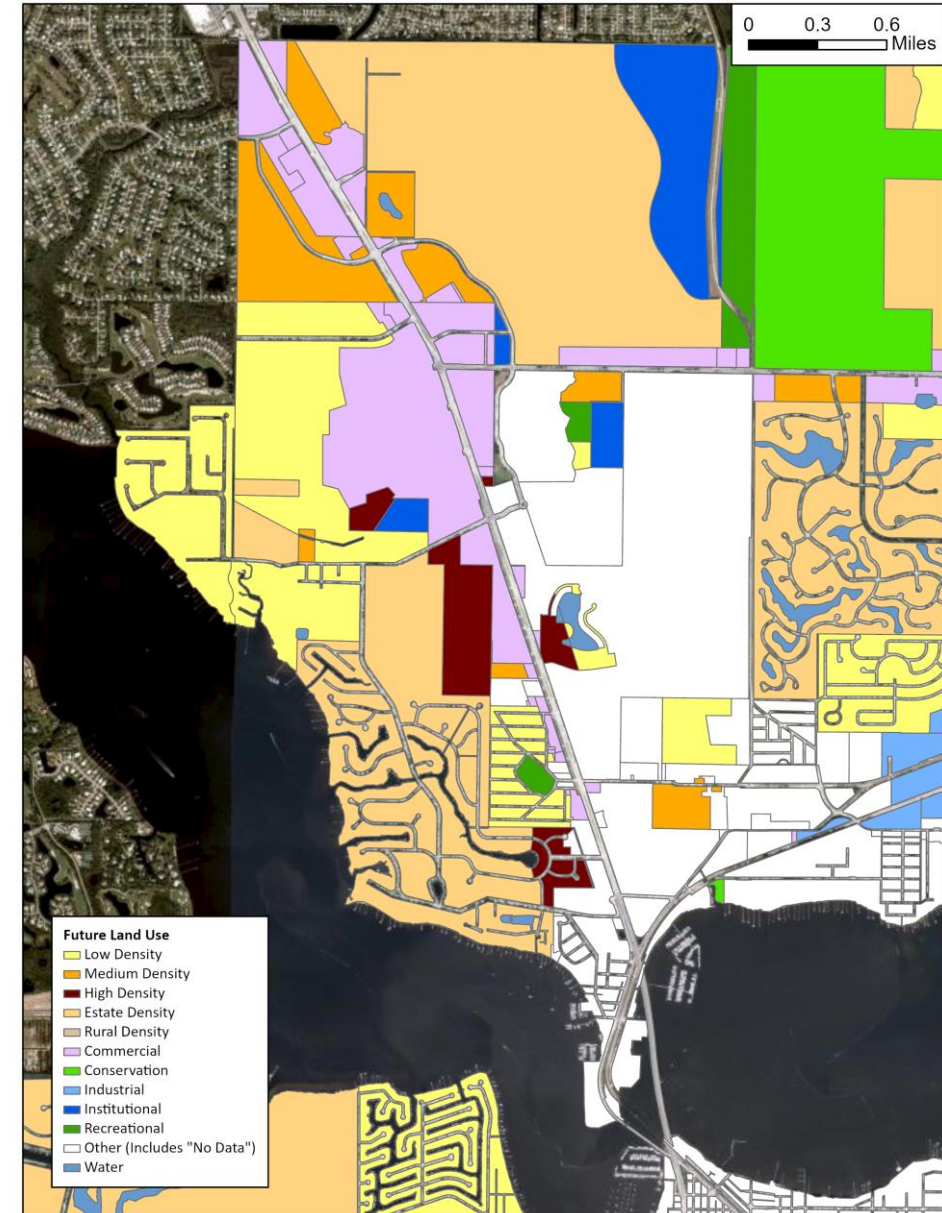
- MARTY Route 1 operates along corridor
 - 5 bus stops each in the northbound and southbound directions.
 - Provides a critical connection between Port St. Lucie and Stuart
- Highest ridership near commercial centers and residential complexes
 - Stop # 910: US-1 & Britt Road
 - Stop # 908: Treasure Coast Mall
 - Stop # 905: Walmart PSL





Development Patterns

- Commercial is the dominant land use
- Residential tends to be located behind fronting commercial, but with no direct connection to US-1
- Lack of connectivity between different land uses exacerbates congestion





Commercial Disconnectivity





Travel Conditions

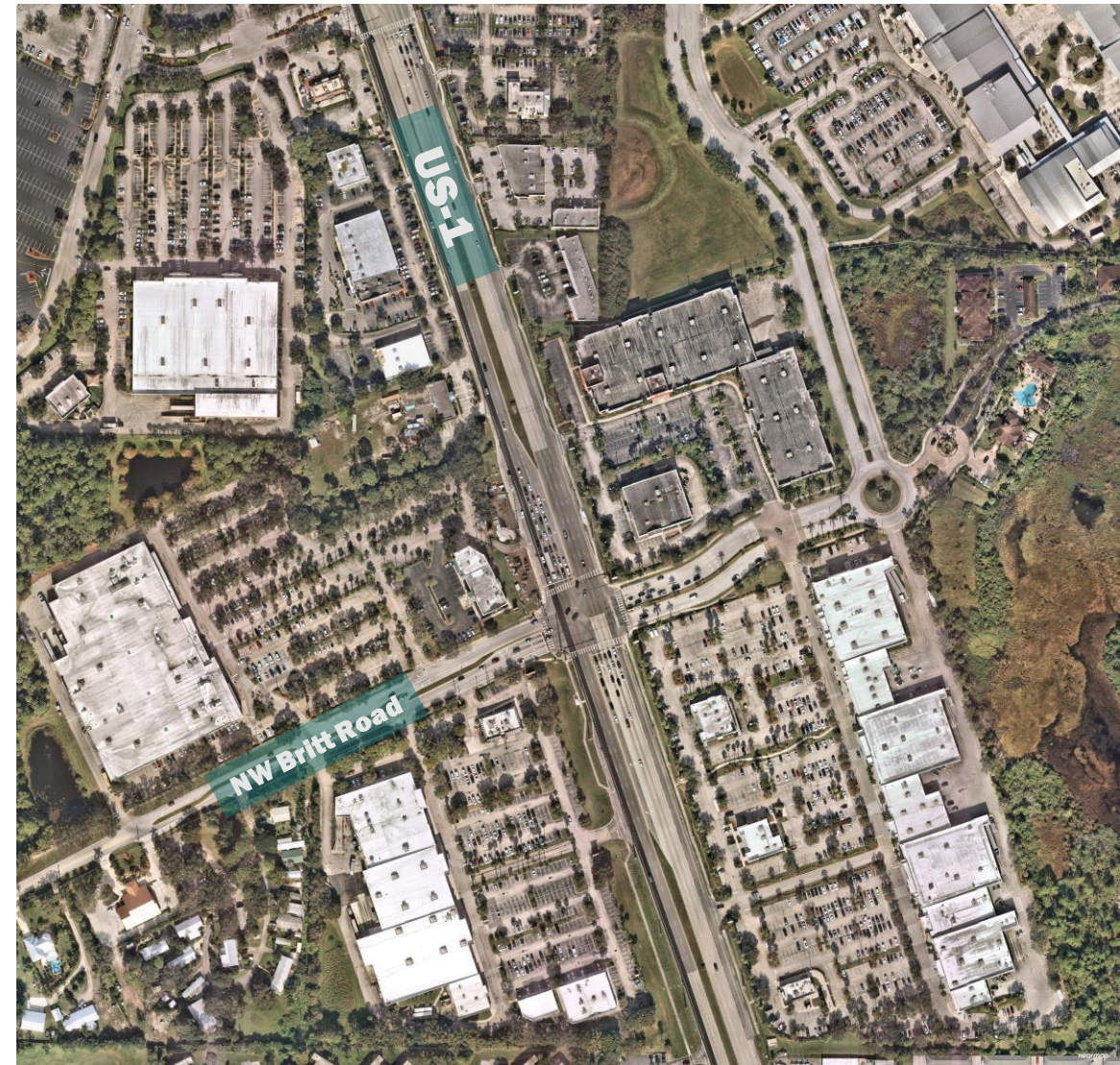
- US-1 serves as a major network link
 - Through traffic the most likely cause of congestion
- Majority of trips diverted to US-1
 - Traffic mostly attributed to work commutes between Port St. Lucie to Stuart
- Frequent stopping and turning vehicles caused by one-way in/one-way out style developments





Limited Vehicle and Pedestrian Access

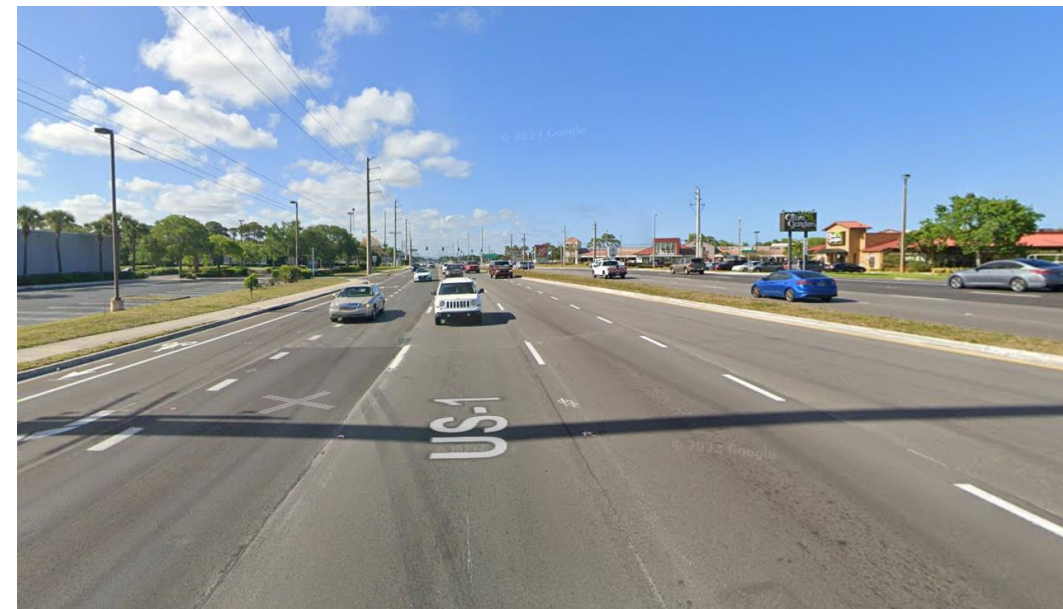
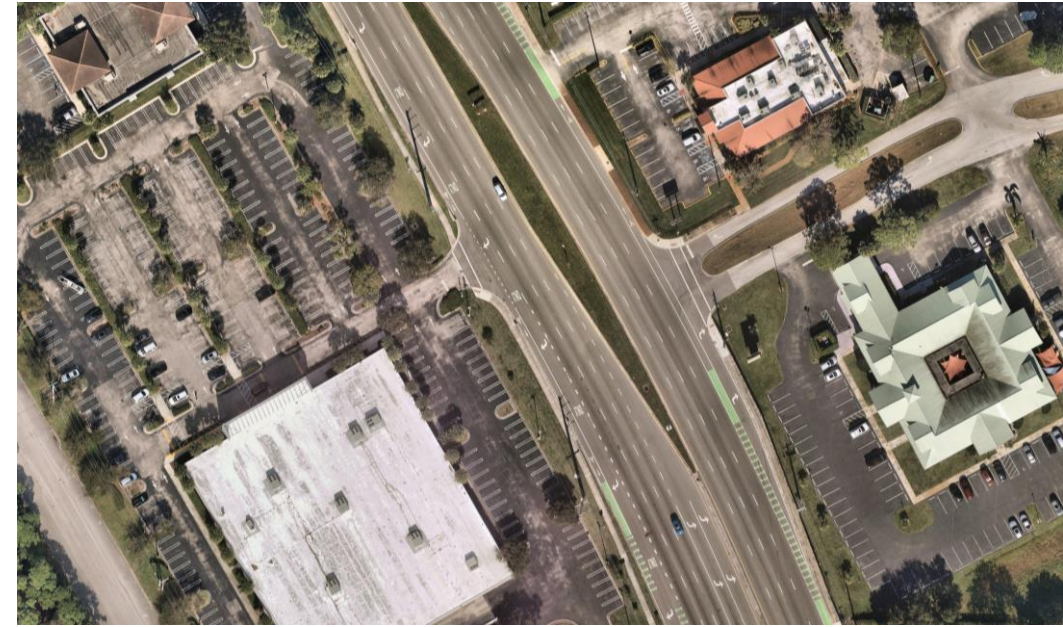
- Large parking lots within large properties
- Limited route options for drivers
- Lack of connectivity results in longer trips





Existing Sidewalks

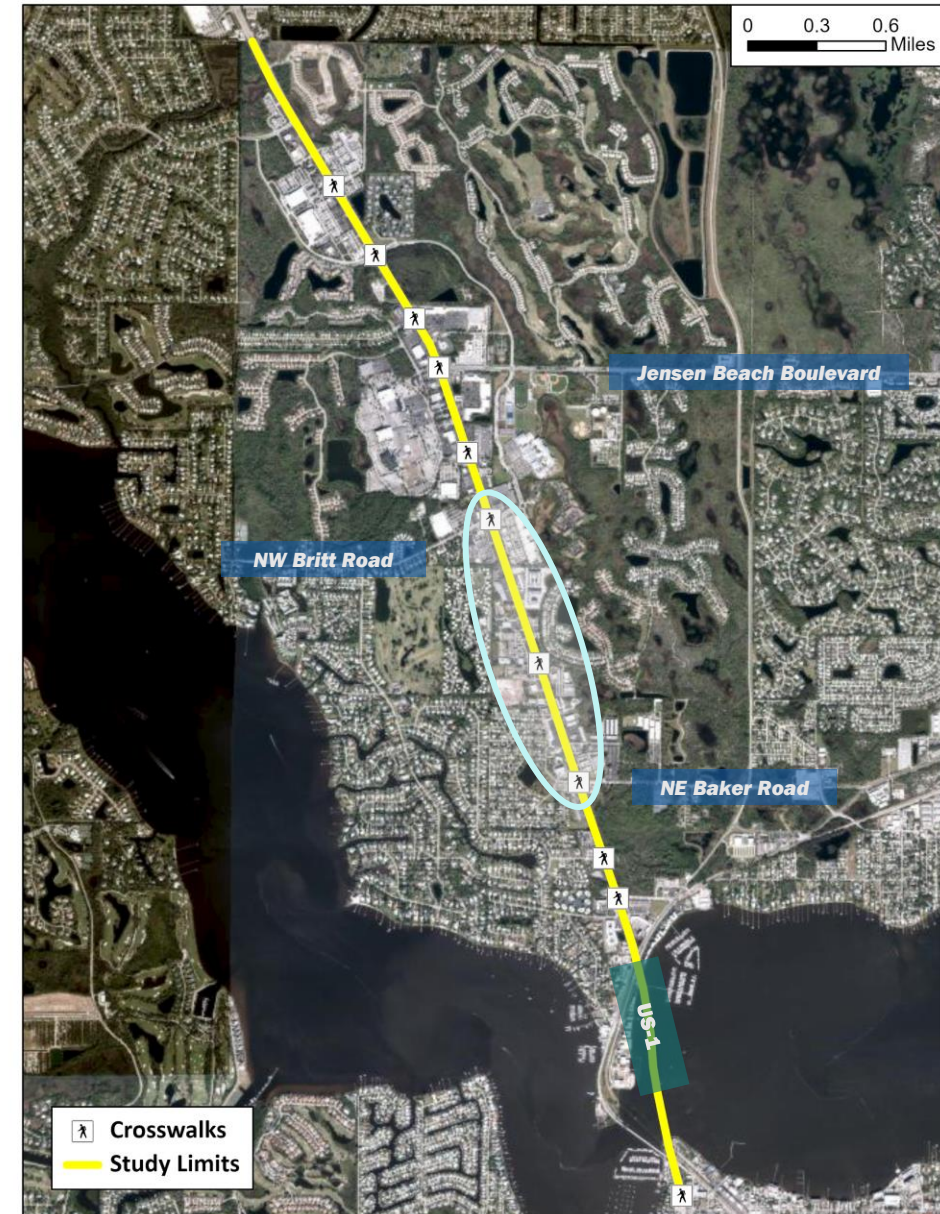
- Sidewalk connections to commercial centers and residential complexes are minimal
- Network rarely extends past the lining of US-1
- Deters people from accessing businesses or homes by biking or walking





Crosswalks

- Long distances to cross US-1
 - Approx. 1/4 mile between signalized crosswalks
- Emphasizes motorized travel
- Limits accessibility for bikers and walkers





Lack of Pedestrian Facilities Within Parcels

- Pedestrian crossings
- Lighting
- Street Trees/Shade
- Bus shelters





Access Interactive Polling Application

- There are **19** questions.
- The response pad will light up green when your response has been sent in.
- The response pad lights up red, if an invalid choice was chosen.
- Your response cannot be changed once it is submitted.



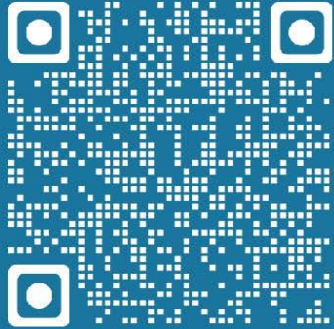


Access Interactive Polling Application

Kimley»Horn **BONNIE LANDRY**
& ASSOCIATES Professional Planning Services

MARTIN MPO
Metropolitan Planning Organization

**WE WANT TO HEAR
FROM YOU!**



Scan to complete
the survey.

US-1 Congestion Management Project



The Martin MPO, in collaboration with Martin County and the City of Stuart, are seeking input on ways to improve traffic and safety on US-1 from the south side of the New Roosevelt Bridge north to the St. Lucie County line.



Access Interactive Polling Application

Kimley»Horn

BONNIE LANDRY
& ASSOCIATES Professional Planning Services

MARTIN MPO
Metropolitan Planning Organization

Lucine Martens
lmartens@martin.fl.us
(772) 288-5412

Stewart Robertson
stewart.robertson@kimley-horn.com
(954) 535-5104

Bonnie Landry
bonnie@bclandry.com
(772) 266-9427

Contact Us!



This document may be reproduced upon request in an alternative format by contacting the ADA Coordinator (772) 320-3131, the County Administration Office (772) 288-5400, Florida Relay 711, or by completing our accessibility feedback form at www.martin.fl.us/accessibility-feedback.



TEST QUESTION – How many years have you lived in Martin County?

- a) 1 year or less
- b) 2 years – 4 years
- c) 5 years – 9 years
- d) 10 years – 15 years
- e) More than 15 years
- f) I do not live in Martin County



#1 Are you a:

- a) Permanent resident of Martin County
- b) Seasonal resident of Martin County
- c) Permanent resident of St. Lucie County
- d) Seasonal resident of St. Lucie County
- e) Other



#2 Where do you work primarily?

- a) Martin County
- b) St. Lucie County
- c) Work from home
- d) Unemployed
- e) Retired
- f) Other



#3 If you work outside the home, when do you typically commute?

- a) “Rush hour,” e.g., 7-9am and/or 3-6pm
- b) “Lunch time,” e.g., 11:30 am to 1:30 pm
- c) Times other than rush hour
- d) Variable



#4 Where do you primarily go to shop, to eat, beach and for recreation or entertainment?

- a) Martin County
- b) St. Lucie County
- c) Other



#5 Think about how you most often get around for work, school, shopping, errands, etc. How do you most often get where you need to go?

- a) I walk.
- b) I drive a car, truck, or van.
- c) I drive a motorcycle.
- d) Family or friends drive me.
- e) I take public transit (Marty, Community Coach, etc.)
- f) I use ridesharing like Uber or Lyft.
- g) I drive a golf cart.
- h) I drive another electric vehicle (e-bike, e-scooter, e-unicycle.)



#6 Do you travel on US-1 /NW Federal Highway anywhere between SW Joan Jefferson Way (southern end of the Roosevelt Bridge) and the Martin County/ St. Lucie County line (south of SR 716/SE Port St. Lucie Boulevard)?

- a) Five or more times per week, on average
- b) Three to four times per week, on average
- c) Once to twice per week, on average
- d) Less than once per week, on average



#7 How do you generally feel about using this particular section of US-1?

- a) I enjoy traveling on this section
- b) I feel neutral about traveling on this section of US-1
- c) I typically use this section but dislike it more than other roadways
- d) I typically avoid this section
- e) I avoid this section unless absolutely necessary to get where I need to go



#8 Do you work at a location on or along this section of US-1?

- a) Yes
- b) No



#9 Do you shop, dine, run errands, or go out for entertainment at a location on this section of US-1?

- a) Regularly
- b) Sometimes
- c) Seldom or Never



#10 Thinking about when you use this section of US-1:

- a) I most often travel to a single destination on this section.
- b) I most often travel to multiple destinations on this section in the same trip.
- c) I most often travel through this section to a destination somewhere else
- d) Roughly even mix of to and through



#11 Part A) From your experience, rank the following segments of this section of US-1, from least congested (1) to most congested (3):

SW Joan Jefferson Way to NW Britt Road (South side of Roosevelt Bridge to Target Shopping Center.

- 1) Less Congested
- 2) More Congested
- 3) Most Congested



#11 Part B) From your experience, rank the following segments of this section of US-1, from least congested (1) to most congested (3):

NW Britt Road to NW Jensen Beach Blvd. (Target Shopping Center to NW Mall Entry)

- 1) Less Congested
- 2) More Congested
- 3) Most Congested



#11 Part C) From your experience, rank the following segments of this section of US-1, from least congested (1) to most congested (3):

NW Jensen Beach Boulevard to NW Goldenrod (NW Mall Entry to Walgreens)

- 1) Less Congested
- 2) More Congested
- 3) Most Congested



#12 Does traffic congestion on this section of US-1 cause you to seek other routes when possible?

- a) Yes, most or all of the time.
- b) Sometimes
- c) Rarely or never

If you chose a) or b), what is your alternative route?

(Write this in on your comment card.)



#13 Thinking about safety when traveling on this section of US-1 ...

- a) I usually or always feel unsafe.
- b) I sometimes feel unsafe.
- c) I rarely or never feel unsafe.



#14 Have you ever been involved in a crash or collision on this section of US-1?

- a) Yes
- b) No, but I have been in a near-miss
- c) No



#15 Do you feel there is adequate lighting on this section at nighttime?

- a) Yes
- b) No

If you chose “no”, where is more light needed?

(Write this in on your comment card.)



#16 Do you walk or ride a bike/scooter along this section of US-1 as a means of transportation?

- a) Yes, I usually or always walk or bike here to get where I'm going.
- b) Sometimes I walk or ride my bike here to get where I'm going, but sometimes I travel in other ways, such as in my car.
- c) I rarely or never walk or ride a bike here for transportation.



#17 Do you walk or ride a bike/scooter along this section of US-1 for recreation or exercise?

- a) Yes
- b) No



#18 If you ride a bike on this section of US-1, do you...?

- a) Always or mostly ride in the bike lane / shoulder where possible.
- b) Always or mostly ride on the sidewalk where possible.
- c) It depends on when or where I'm going and why.

If you chose c), please share more details.

(Write this in on your comment card.)



#19 Do you ride the Marty bus Route 1 (US1)?

- a) I regularly use Marty here.
- b) I sometimes use Marty here.
- c) I rarely use Marty here.
- d) I have never used Marty here.



Thank You!